



# PUPPY DIARRHEA KIT INSTRUCTIONS

## PUPPIES WITH DIARRHEA WHO ARE OTHERWISE NORMAL

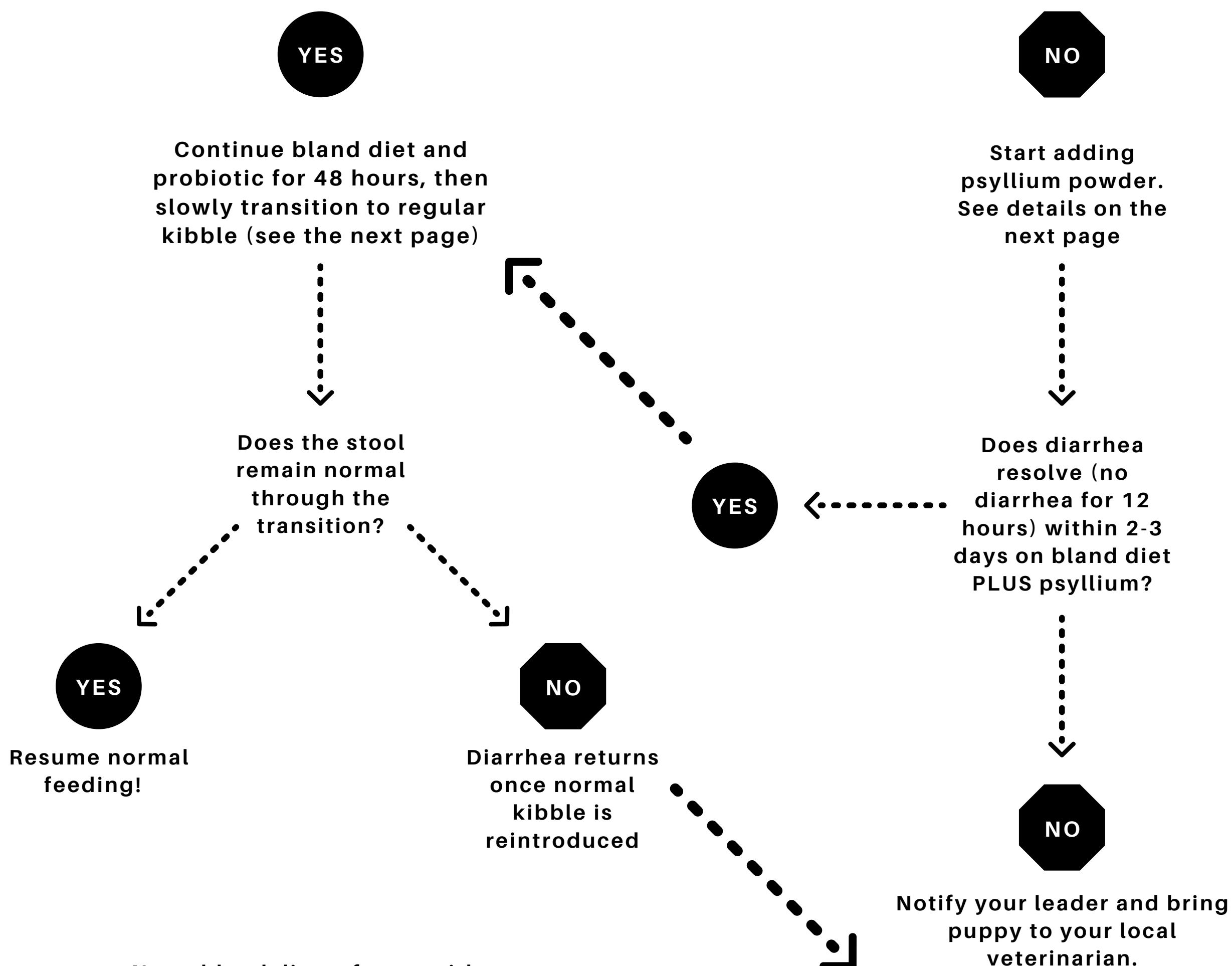
Review the **Fecal Scoring Chart**. Diarrhea is defined as 2 or more #6 or #7 stools. Normal is defined as having good energy and appetite, no blood in stool, and no vomiting. If both of the above are true, proceed to the next step. If the puppy has other signs of illness, see the next page.

It's time to use the Diarrhea Kit, as follows:

1. Email [vetsupport@guidedogs.com](mailto:vetsupport@guidedogs.com) with puppy name, ID#, and date you started the kit. Please also notify your Leader.
2. Stop feeding regular diet and begin feeding the kibble contained in the kit (same #cups/day as regular food) or you may choose to feed a home cooked bland diet (see recipe on the next page)
3. Begin probiotic powder. Sprinkle 1/2 packet on meal once per day for 8 days.
4. Offer water regularly
5. We recommend that you also call your local veterinarian to schedule an appointment for about 5 days from now; you can cancel if the diarrhea resolves. If you do visit the vet, bring the information from this kit for their review.

Do NOT fast the puppy or give Pepto Bismol or Imodium.

Does diarrhea resolve within 2-3 days with the bland diet and probiotic from the kit?



Note: bland diet refers to either homemade or the kibble provided in the kit. See "Bland Diet" on the next page for more details.

Once you are at the vet's office, call VFA for authorization if treatment will exceed \$200.





# PUPPY DIARRHEA KIT INSTRUCTIONS

## Psyllium (fiber source)

Puppies under 30lbs:  
Add ½ tsp to food twice daily.

Puppies over 30lbs:  
Add 1 tsp to food twice daily.

Feed through diet transition, then taper off over 1 week after fully transitioned to regular diet.

## Bland diet

Homemade Recipe: cooked white rice and boiled skinless chicken breast, boiled ground turkey or beef, or low-fat cottage cheese. Feed 3 parts rice to 1 part chicken/cottage cheese. Feed a total of 4 cups per day, spread out over 3-4 meals. Do not feed exclusive homemade diet for more than 5 days without consulting local or GDB veterinarian.

How to transition back to regular kibble:

3/4 bland diet + 1/4 kibble for 3 meals, then 1/2 bland diet + 1/2 kibble for 3 meals, then 1/4 bland diet + 3/4 kibble for 3 meals.

---

## PUPPIES WITH DIARRHEA WHO HAVE OTHER SIGNS OF ILLNESS

Signs of illness include blood in stool, vomiting, lethargy (low energy), fever, whining, inappetence (won't eat), drooling, or possible/known dietary indiscretion

If any of the above signs are present, proceed to next step.

**Notify your Leader and bring the puppy to your local veterinarian.**

You may need to seek care at an emergency clinic if your local veterinarian is not available in a timely fashion.

We're so sorry the puppy isn't feeling well and hope things improve quickly!

Once you are at the vet's office, call VFA for authorization if treatment will exceed \$200.

